

# Using The 58-278 NOK Seal Installation Tool Kit

## K598 00/10 & 20/30 Axle

### NOK Seal Installation Procedures

1. Remove the wheels and axle hub assembly from the affected axle as outlined in the 598 00/10 -20/30 Axle Repair Manual.
2. Support the hub assembly on a lifting fixture and wood block as shown (Fig. 1).

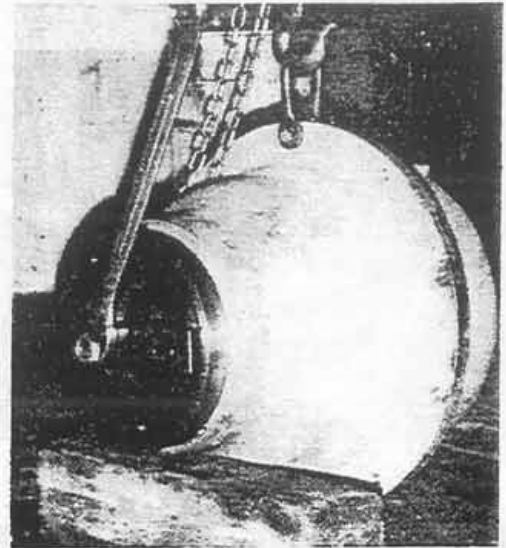


Figure 1:

3. Install the 58-006 bridge to the hub and install the forcing screw as shown with one nut on each side of the bridge plate, tighten these nuts securely (Fig. 2).
4. On the seal side of the hub, screw a forcing screw nut part way onto the forcing screw and install seal retainer puller bridge from the 58-278 tool kit as shown (Fig. 3).

**NOTE:** An alternative method is to install the 58-281 forcing plug into the center hole of the puller bridge and use the forcing screw to push directly against the bridge.

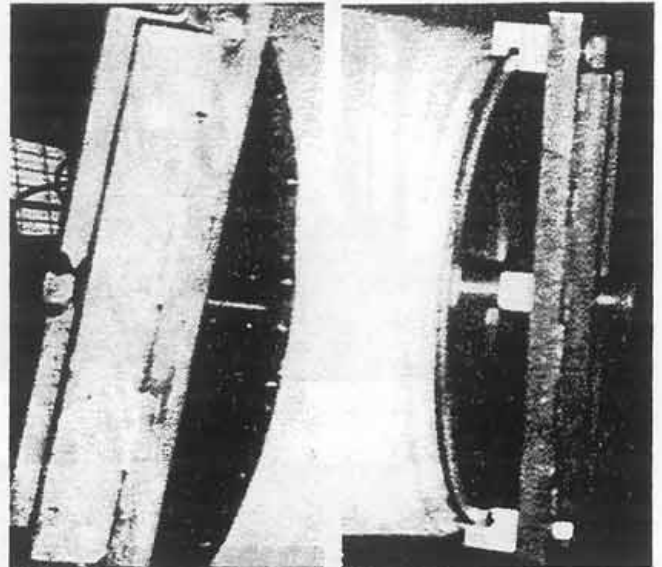


Figure 2:

Figure 3:

5. Use an open end wrench to tighten the forcing screw nut against puller bridge as shown to force the seal case assembly from the hub (Fig. 4).

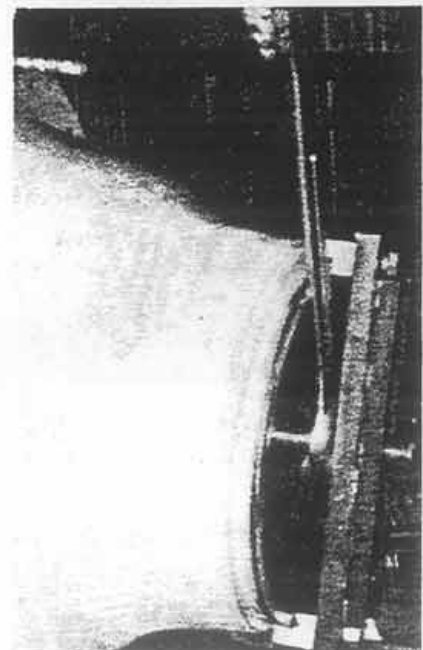


Figure 4:

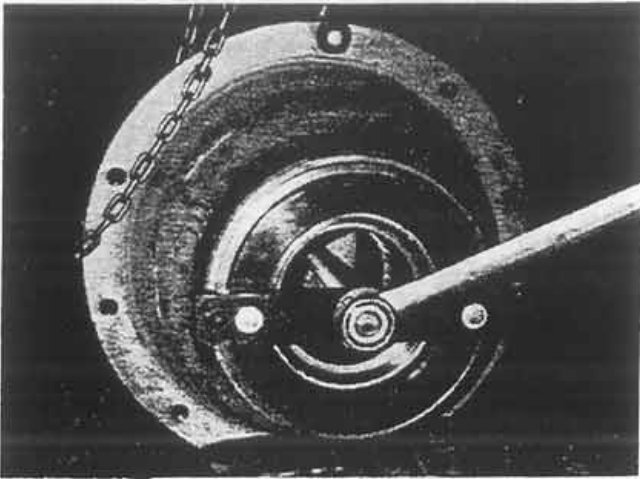


Figure 5:

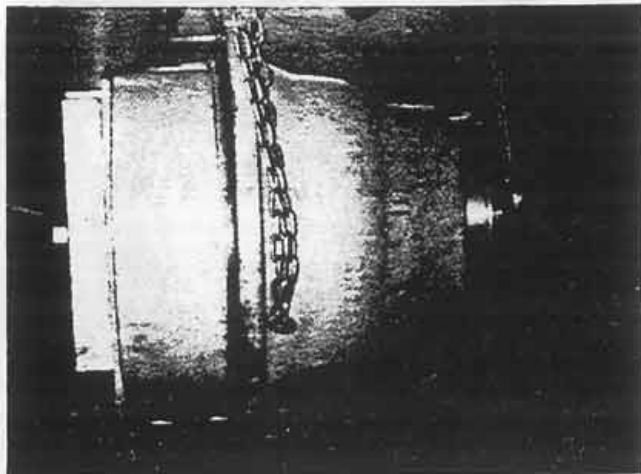


Figure 6:

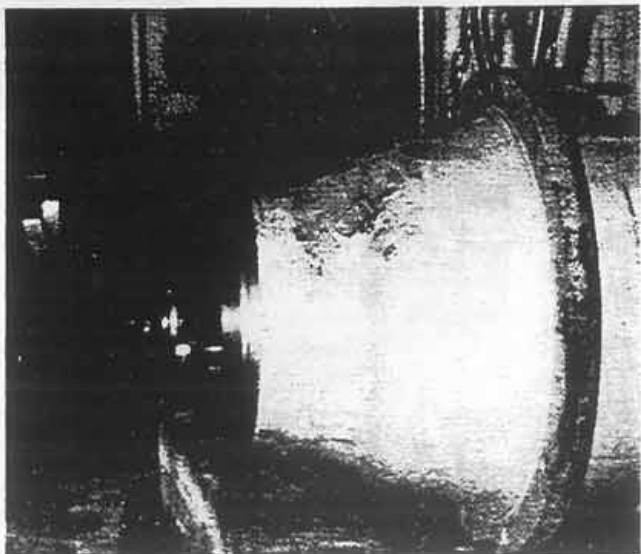


Figure 7:

6. Clean the hub to seal case mating surface, apply a light even coat of RTV sealant to the seal case to hub mating surface. Position the seal case in the hub bore, use a dead blow type hammer to lightly start the seal case squarely in position. Install the push ring and bridge assembly on the forcing screw. Install the forcing screw nut and carefully tighten the nut to pull the seal case into the hub until bottomed in the hub bore. Remove the installer ring and bridge.

**NOTE:** A new seal case must be used with the new NOK seal because of the greater outside diameter of this seal.

**IMPORTANT:** Do not install the NOK seal into the seal case before installing the seal case into the hub.

7. Apply a light even coat of RTV sealant to the OD of the NOK seal assembly. Install the seal assembly by hand over the shouldering ring into the bore of the seal case. Carefully install the pusher ring and bridge over the forcing screw and into the seal case against the seal assembly. Install the forcing screw nut and carefully draw the seal assembly into the seal case until bottomed (Fig. 7).

**IMPORTANT:** It may be necessary to use a dead blow hammer to tap around the pusher ring as it is being drawn in to ensure the seal assembly starts squarely into the bore of the seal case.

**NOTE:** The NOK seal is a 2-piece assembly, do not separate the seal during the installation procedure.

8. Reassemble hub assembly to the axle as outlined in the 598 00/10 & 20/30 axle repair manual.